



时新照明
SHIXIN LIGHTING

2019 |
SPECIFICATION
LED MODULE



3030 LED Light Module(60 in 1)

Main Features

- Adopted high heat conduction fin heat dissipation technology, advanced convection hole design which can rapidly dissipate heat when installed in the lamp.
- Excellent operating temperature $-40^{\circ}\text{C} \sim 50^{\circ}\text{C}$
- The ultra-thin fin heat dissipation structure reduces the weight of the module, effectively reduce the weight of lamps while satisfying the heat dissipation.
- Variety beam angles, $150 \times 70^{\circ}$, $140 \times 100^{\circ}$, 24° , 36° , 60° , 90°
- High safety, low voltage input voltage is safe for people, which effectively prevents electric shock and electric leakage.
- Easy to assemble and maintain with national standard M15 electrical interface, achieved plugged and play, only need loosening the screw during maintenance.
- Green product, no UV, IR radiation or mercury pollution. Passed IEC62471.
- With excellent housing design reach IP66 rating.
- Life-span over 50,000 hours, 5 years warranty.

10 years experience of LED industrial light
L80 exceeds **80,000** hours



Parameters

Electric Data

Model	SX-MSL-3060-70			
Power	30W	40W	50W	60W
Input Voltage	36V			
Output Current	0.85A	1.15A	1.4A	1.63A

Photometric Specifications

LEDs	3030 LED			
CRI	> 70(>80,>90 optional)			
LEDs Qty	42pcs	42pcs	60pcs	60pcs
Luminous Efficiency	145lm/w	135lm/w	135lm/w	125lm/w
Luminous Flux(±5%)	4350lm	5800lm	6750lm	7500lm
CCT	3000K/4000K/5000K			
Beam Angle	150x70°,140x100°,24°,36°,60°,90°			

Mechanical Specifications

IP Rate	IP66
Working Environment	-40°C~50°C,20%~90% H.R
Storage Temperature	-40°C~85°C,10%~90% H.R.
Body Material	Aluminum AL6063-T5
Lens Material	PC
Connector Size	M15
Module Size(mm)	300x70x47
Lifespan	>50,000 Hours
N.W.(KG)	0.42KG/pcs

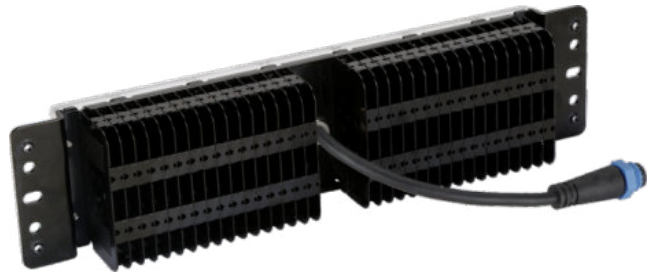


LM-80

IK10

IP66

External Design Features



Product Details



LED Source

Use customized chip from TOP 5 LED chip manufacturer, 3030 LEDs provide very excellent heat uniformity.



Beam Angles

150x70°, 140x100°, 24°, 36°, 60°, 90°
Suitable for street light, tunnel light, high bay light, flood light etc.



Lower Weight

Ultra-thin fin heat dissipation structure reduces the weight of the module while satisfying the heat dissipation.



IP66 Module

Suitable for all kinds of industrial environment, IP66 dust-proof and water-proof.



Connector

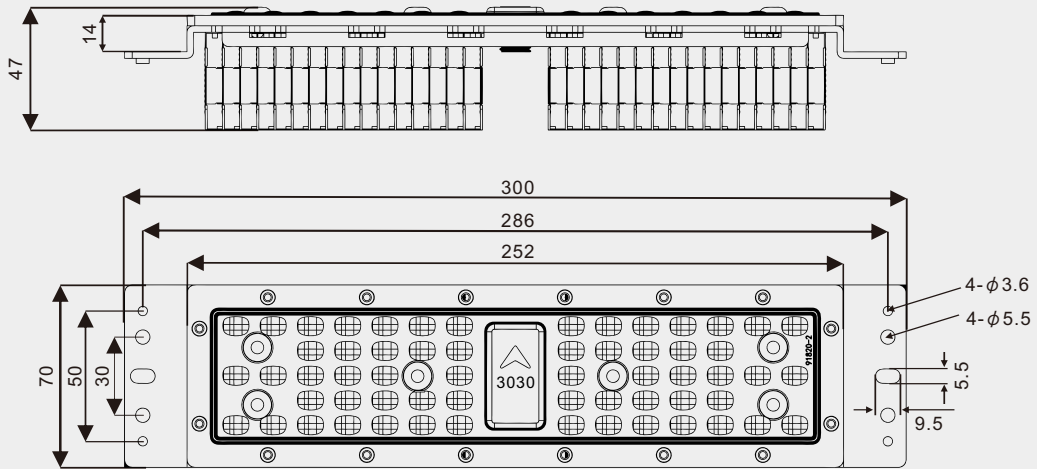
Adopt the IP67 connector with power connection, and realize plug and play.



Heat sink

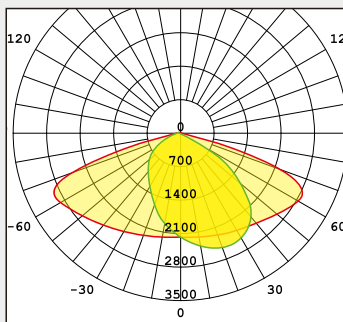
Adopted advanced convection hole design fin heat dissipation technology.

Dimension(mm)

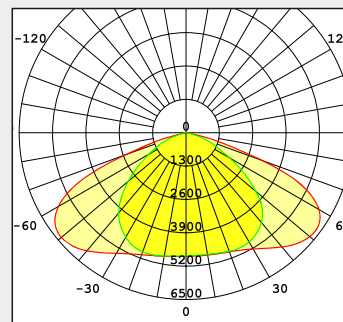


Distribution Curve

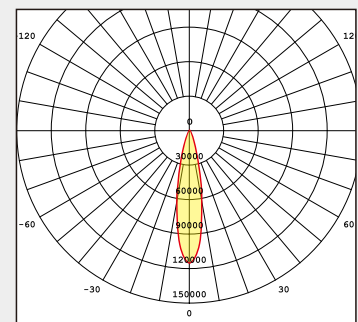
150x70°



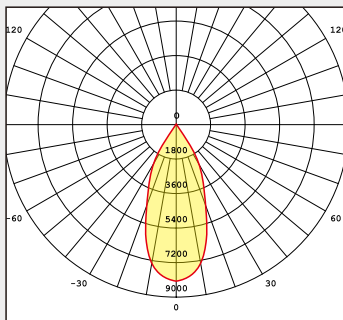
145x100°



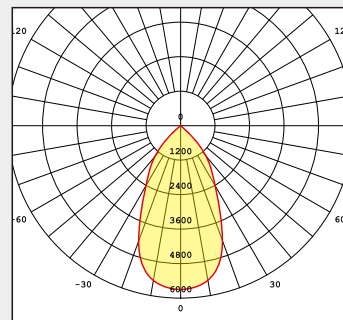
24°



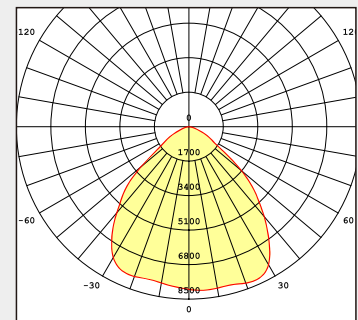
36°



60°



90°



Application

Modules Application For Industrial Lighting



Dialux

